

**25MM COLD CATHODE LIGHT SYSTEM
60 OR 120 mA. LAMPHOLDERS - INTERIOR APPLICATION - DIMMABLE**



PARTIAL LIGHTING PLAN

MAX. LAMP LENGTH: 7'-10"

FIELD DIMENSION CURVES

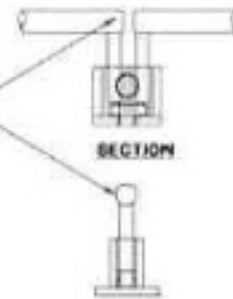
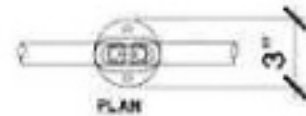
MAX. SECONDARY FEED LENGTH: 20'

TRANSFORMERS LOCATED IN AN ACCESSIBLE & VENTILATED AREA

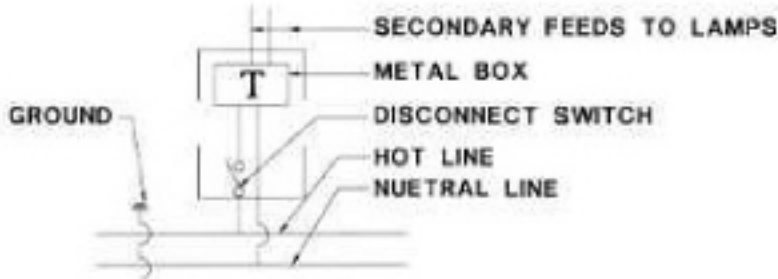
DIMMABLE SYSTEM: NORMAL POWER FACTOR TRANSFORMER



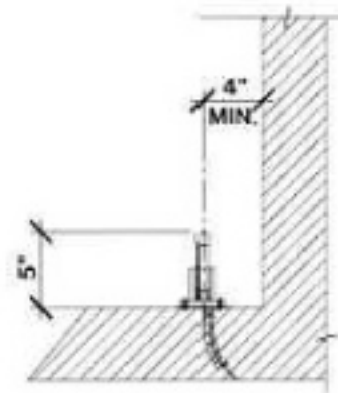
DOUBLE FEED LAMPHOLDER



INTERMEDIATE LAMPHOLDER



TRANSFORMER WIRING SCHEMATIC



COVE SECTION

These drawings and specifications are the exclusive property of Los Angeles Neon + Cathode and may not be reproduced without permission. Please contact LAN+C for additional information as required.